

Highlights:

- Quantitative results in only 5 minutes
- Read strips wet – no drying necessary
- Simple protocol
- No incubation equipment needed

Contents of Kit:

- 50 QuickTox Strips packed in a moisture-resistant canister
- 50 reaction vials
- 100 pipette tips
- DB2 Buffer
- Available in 50-strip individual kit format or bulk packaging

Items Not Provided:

- Orbital/rotary shaker
- Plastic sample cups with lids*
- Solvent (50% ethanol)*
- 20 mesh screen
- Graduated cylinder*
- Pipette to deliver 100 µL*
- Tubes for additional dilution of high samples
- Timer
- Scissors
- QuickScan System*

*Available as accessories – see list on Page 4



Correct 20 mesh grind for corn

Catalog Number AQ 109 BG

Intended Use

This EnviroLogix QuickTox Kit for QuickScan Aflatoxin is designed to quickly extract and screen corn for the presence of total aflatoxin. The QuickTox Kit is designed to provide quantitative results in corn grain for aflatoxin residues ranging from 2.5 ppb to 30 ppb in the standard assay, and up to 100 ppb with additional dilution. The limit of detection is less than 3 ppb, conforming to GIPSA criteria.

How the Test Works

A composite corn sample is first collected, then extracted to solubilize any aflatoxin present. Each sample should be ground to a fineness of 20 mesh and extracted with diluted solvent. This extract is further diluted for testing with the QuickTox Kit.

Each QuickTox Strip has an absorbent pad at each end. The protective tape with the arrow indicates which end of the strip to insert into the reaction vial. The sample extract travels up the membrane strip and is absorbed into the larger pad at the top of the strip. At five minutes, the strip is cut off at the top of the arrow tape, the bottom pads are discarded, and the strip is inserted into the QuickScan reader to obtain quantitative results.

Preparation of the Sample

Please note: sample extract should be tested shortly after dilution with Buffer (Step 8). Make sure strips and Buffer are at room temperature and ready for use before the dilution step.

Determine number and size of sub-samples

1. Collect a composite corn sample according to your own sampling plan or USDA/GIPSA guidelines. Consult USDA/GIPSA reference documents such as <http://archive.gipsa.usda.gov/reference-library/handbooks/grain-insp/grbook1/bk1.pdf> to help design a plan that fits your needs.
2. Grind samples using a mill which provides a sample that passes through a 20 mesh sieve. Mix ground material thoroughly before sub-sampling.

Extract corn sample

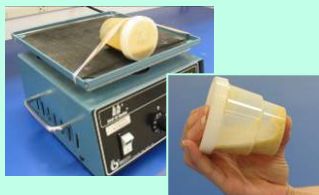
3. Weigh 20 to 50 grams of milled sample into a disposable sample cup with lid and add two volumes of 50% ethanol (2 mL per gram of sample, i.e. 20 grams, add 40 mL). To purchase or prepare a 50% ethanol solvent, see Precautions & Notes.

NOTE: For GIPSA testing, a 50 gram sub-sample should be blended with 100 mL of solvent.

4. Cap sample cup tightly and place on shaker for 1 minute. Shaker should be operated at the highest speed. Alternately, samples may be shaken by hand for 1½ to 2 minutes. Samples that are not thoroughly mixed may adversely affect test results due to incomplete extraction.



Measure solvent, add to ground sample



Shake mechanically or by hand



Add Buffer to vial first, then add extract; mix well with pipette tip



Place strip in vial



Wait 5 minutes for results

5. Extract will immediately begin to separate into 2 layers (a more finely ground beginning sample may take a few minutes to settle). The top (yellowish) layer containing the aflatoxin residues will be used in testing.

Dilute corn extract

6. Using a calibrated pipette with a **new tip**, place 100 microliters (100 μ L) Buffer into a reaction vial. Take care not to contaminate Buffer—use a new tip for each test and keep covered when not in use.
7. With **another new** pipette tip, remove 100 μ L from the top (yellowish) layer of extract, avoiding particulates. Add extract to reaction vial containing Buffer.
8. **Mix Buffer and sample extract thoroughly** by stirring or drawing the liquids up and down in the pipette tip until the mixture is uniformly yellow.

NOTE: Samples that are not thoroughly mixed and/or accurately pipetted will adversely affect test results. After diluting the sample, the final volume in the reaction vial should be 200 μ L. Do not reuse diluted samples. Use a new reaction vial for each sample. Use two pipette tips (one for Buffer, one for extract) for each sample.

For testing samples at levels greater than 30 ppb:

If after running and reading the test, the initial result is greater than 30 ppb (" > 30 ppb" on QuickScan), and further knowledge about the level of contamination is desired, samples can be retested by further dilution of the sample extract.

1. In a separate tube (not provided), combine five parts of 50% ethanol solvent with one part extract from the top layer of the original extraction (measure carefully). **Mix well.**
2. Using a calibrated pipette with a **new tip**, place 100 μ L Buffer into a reaction vial.
3. With a fresh pipette tip, add 100 μ L of the newly diluted extract to the reaction vial containing Buffer. Mix thoroughly. Because the extract is diluted six-fold, its addition to the Buffer will not turn the mixture yellow.
4. Follow the instructions under How to Run. Choose 1:6 under the dilution tab on QuickScan Results Screen—the System will calculate and record the aflatoxin level in diluted samples.

How to Run the QuickTox Strip Test

1. Allow refrigerated canisters to come to room temperature before opening. Remove the QuickTox Strips to be used. Avoid bending the strips. Reseal the canister immediately.
2. Place the strip into the reaction vial containing the Buffer and sample extract. The arrow tape on the end of the strip should point into the reaction vial.
3. The sample extract will travel up the strip (flow may not be visible immediately—this is expected and normal). Reaction vials will stand on their own.
4. Allow the strip to develop for 5 minutes. Immediately cut off and discard the bottom section of the strip covered by the arrow tape. Insert strip into the QuickScan reader for quantitation.

Use of the QuickScan System

Detailed instructions for use of the QuickScan system are supplied with each unit, and can also be found at www.envirologix.com/quickscan.

In summary, a strip is inserted face down in the carrier with the barcoded end closest to the handle. The carrier is inserted into the reader and the strips are read by touching or clicking on the "Read Test" area of the screen. Results are then recorded in an electronic worksheet, allowing each user to report and track data easily.

Results are reported in the range of 2.5 to 30 ppb. Results less than 2.5 ppb are reported as "<LOD" (less than Limit of Detection) and results greater than 30 ppb are reported as ">30 ppb." If quantification is desired above 30 ppb, a further dilution of the sample extract can be performed (see "For testing samples at levels greater than 30 ppb" above).

Kit Storage

This QuickTox Kit should be stored refrigerated. Note the shelf life on the kit box. Prolonged exposure to high temperatures may adversely affect the test results. Do not open the desiccated canister until ready to use the strips.

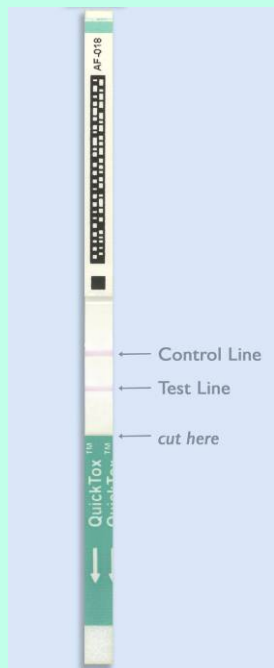
Cross-reactivity

The following mycotoxins have been tested with this kit and no false positive results occurred at the 200 ppm level.

- DON (deoxynivalenol)
- Fumonisin B₁
- Ochratoxin A
- Zearalenone

Precautions and Notes

- This product is currently not applicable for use in testing any other crops.
- As with all screening tests, it is recommended that results be confirmed by an alternate method when necessary.
- The assay has been optimized for use with the protocol provided in the kit. Deviation from this protocol may invalidate the results of the test. Proper and thorough mixing, along with accurate pipetting, are essential to accurate results.
- The results generated through the proper use of this diagnostic tool reflect the condition of the working sample directly tested. Extrapolation as to the condition of the originating lot, from which the working sample was derived, should be based on sound sampling procedures and statistical calculations which address random sampling effects, non-random seed lot sampling effects and assay system uncertainty. A negative result obtained when properly testing the working sample does not necessarily mean the originating lot is entirely negative for the analyte or protein in question.
- Strips should be read wet promptly at five minutes.
- Protect all components from hot or cold extremes of temperature when not in use. Do not leave in direct sunlight or in vehicle.
- For convenience, accessories and solvent can be ordered from EnviroLogix (see list, below). Purchase 50% ethanol, or prepare using 100% ethanol as follows:

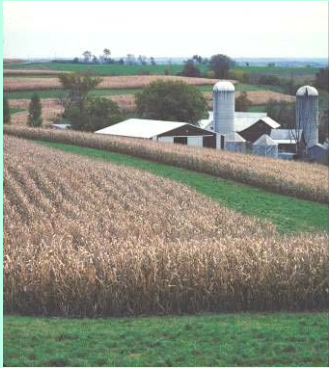


Cut strip and place in QuickScan reader immediately —no drying step!



Place strip in QuickScan carrier





50% Ethanol Preparation Instructions: For 100 mL, measure 50 mL 100% ethanol [reagent grade or better]; pour into suitable container with cap. Add 50 mL deionized or distilled water. Cap tightly and shake to mix. Use care when uncapping.

- **IMPORTANT:** Ethanol is flammable and toxic. Avoid inhaling vapors or contact with the skin, eyes, or clothing. Wear personal protective equipment including safety glasses, nitrile gloves (**not latex**), a vapor mask and a lab coat when handling. Keep containers tightly closed and away from heat, sparks and open flame. Observe any applicable regulations when disposing of samples and kit reagents.
- Liquids containing aflatoxin should be treated by the addition of bleach (add a minimum of 10% of the total volume for 10 minutes). All labware should be soaked for 1 hour or more in a 30% solution of household bleach.

Accessories:

Available through EnviroLogix: *Catalog #*

- | | | |
|--|----------------|----------------------|
| ▪ QuickScan™ System | ACC 131 | |
| ▪ Negative Ground Corn Sample | CON 009 | |
| ▪ Positive Ground Corn Sample | CON 109 | |
| ▪ Sample cups with lids | ACC 012-50 | (50/package) |
| ▪ Graduated cylinder | ACC 023 | (50 mL) |
| ▪ MiniPet pipette
(one/location free) | ACC 041 | |
| ▪ 50% Ethanol | ACC E26902-1X4 | (1 bottle, 4L) |
| | ACC E26902-2X4 | (2 bottles, 4L each) |
| | ACC E26902-3X4 | (3 bottles, 4L each) |
| | ACC E26902-4X4 | (4 bottles, 4L each) |





**For Technical Support
Contact Us At:**

EnviroLogix
500 Riverside Industrial
Parkway
Portland, ME 04103-1486
USA
Tel: (207) 797-0300
Toll Free: 866-408-4597
Fax: (207) 797-7533

e-mail:
info@envirologix.com

website:
www.envirologix.com



LIMITED WARRANTY

EnviroLogix Inc. ("EnviroLogix") warrants the products sold hereunder ("the Products") against defects in materials and workmanship when used in accordance with the applicable instructions for a period not to extend beyond a product's printed expiration date. If the Products do not conform to this Limited Warranty and the customer notifies EnviroLogix in writing of such defects during the warranty period, including an offer by the customer to return the Products to EnviroLogix for evaluation, EnviroLogix will repair or replace, at its option, any product or part thereof that proves defective in materials or workmanship within the warranty period.

ENVIROLOGIX MAKES NO OTHER WARRANTIES, EXPRESSED OR IMPLIED, INCLUDING BUT NOT LIMITED TO ANY IMPLIED WARRANTIES OF MERCHANTABILITY OR FITNESS FOR A PARTICULAR PURPOSE. The warranty provided herein and the data, specifications and descriptions of EnviroLogix products appearing in EnviroLogix published catalogues and product literature are EnviroLogix' sole representations concerning the Products and warranty. No other statements or representations, written or oral, by EnviroLogix' employees, agents or representatives, except written statements signed by a duly authorized officer of EnviroLogix Inc., are authorized; they should not be relied upon by the customer and are not a part of the contract of sale or of this warranty.

EnviroLogix does not warrant against damages or defects arising in shipping or handling, or out of accident or improper or abnormal use of the Products; against defects in products or components not manufactured by EnviroLogix, or against damages resulting from such non-EnviroLogix made products or components. EnviroLogix passes on to customer the warranty it received (if any) from the maker thereof of such non-EnviroLogix made products or components. This warranty also does not apply to Products to which changes or modifications have been made or attempted by persons other than pursuant to written authorization by EnviroLogix.

THIS WARRANTY IS EXCLUSIVE. The sole and exclusive obligation of EnviroLogix shall be to repair or replace the defective Products in the manner and for the period provided above. EnviroLogix shall not have any other obligation with respect to the Products or any part thereof, whether based on contract, tort, strict liability or otherwise. Under no circumstances, whether based on this Limited Warranty or otherwise, shall EnviroLogix be liable for incidental, special, or consequential damages.

This Limited Warranty states the entire obligation of EnviroLogix with respect to the Products. If any part of this Limited Warranty is determined to be void or illegal, the remainder shall remain in full force and effect.

License

EnviroLogix has developed this kit using proprietary reagents.

EnviroLogix, the EnviroLogix logo, QuickTox, and QuickScan are trademarks of EnviroLogix Inc.

© EnviroLogix 2010